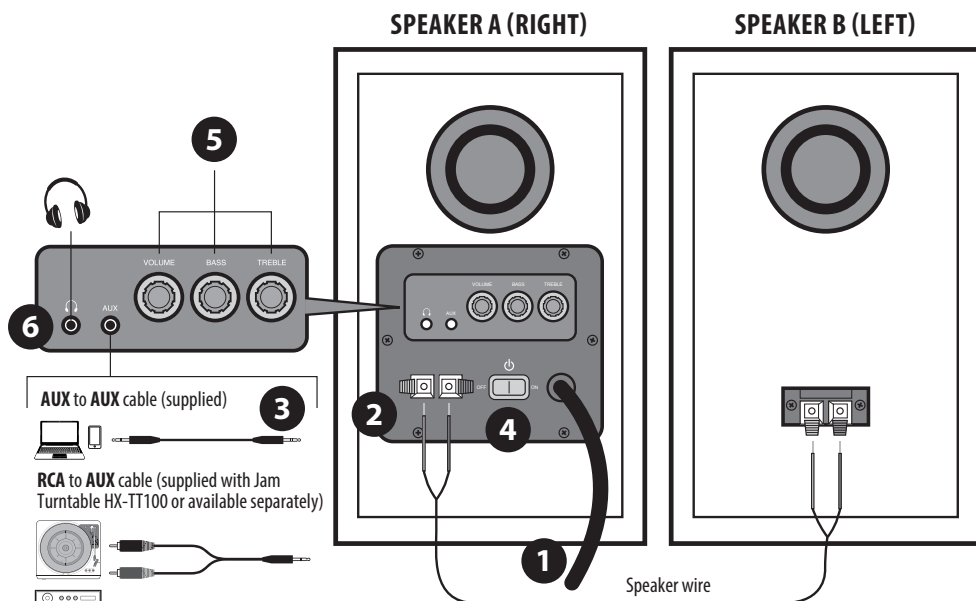


jam[®] **SPEAKER**



INSTRUCTION MANUAL

HX-TS100



WHAT'S IN THE BOX

2 speakers, speaker wire, AUX to AUX cable

USING THE SPEAKERS

1. Connect the plug on speaker A into a mains supply ❶.
2. Connect speakers A and B together using the supplied speaker wire ❷. Push the levers on the speaker connector sockets, slot the ends of the wires into the holes and release the levers to lock. Ensure that you connect the red and black strands of the speaker wire to the corresponding red and black speaker connector sockets.
3. Connect the speakers to an audio source ❸:

Connecting to Jam HX-TT100 Turntable

To connect the speakers to the Jam HX-TT100 Turntable, use the RCA to AUX cable supplied with the turntable. Connect the RCA plugs to the L and R sockets on the back of the turntable and the AUX plug to the AUX socket on the back of speaker A.

Connecting to a device with AUX output

To connect the speakers to a device with an AUX input, use an AUX to AUX cable supplied. Connect one end of the AUX cable to the AUX output on the back of speaker A and the other end to the AUX output on the device.


4. Place the speakers apart in the desired position.
5. Press the power button to switch on the speakers and play music from your turntable or device ❹.

6. To adjust the sound, use the volume, treble and bass knobs on the back of speaker A ❺.
7. Speaker A includes a headphone socket ❻. Connect your headphones using the jack plug and the speaker sound will mute until disconnected.
8. When you have finished using the speakers, press the power button to switch off.

MAINTENANCE

- To clean, unplug the speakers from the turntable or audio device and electrical outlet, then wipe casing with a dry cloth.

WEEE EXPLANATION

 This marking indicates that this product should not be disposed with other household wastes throughout the EU. To prevent possible harm to the environment or human health from uncontrolled waste disposal, recycle it responsibly to promote the sustainable reuse of material resources.

LISTEN RESPONSIBLY



To prevent possible hearing damage, do not listen at high volume levels for long periods.

**READ ALL INSTRUCTIONS BEFORE USE.
SAVE THESE INSTRUCTIONS FOR FUTURE
REFERENCE.**

IMPORTANT SAFEGUARDS

WHEN USING ELECTRICAL PRODUCTS,
ESPECIALLY WHEN CHILDREN ARE PRESENT,
BASIC SAFETY PRECAUTIONS SHOULD
ALWAYS BE FOLLOWED, INCLUDING THE
FOLLOWING:

- ALWAYS ensure the main plug is easily accessible, unplug the appliance from the electrical outlet immediately after using and before cleaning. To disconnect, turn all controls to the 'OFF' position, then remove plug from outlet.
- NEVER leave an appliance unattended when plugged in. Unplug from the mains outlet when not in use and before putting on or taking off parts or attachments.
- This appliance can be used by children aged from 8 years and above and persons with reduced physical, sensory or mental capabilities or lack of experience and knowledge if they have been given supervision or instruction concerning use of the appliance in a safe way and understand the hazards involved. Children shall not play with the appliance. Cleaning and user maintenance shall not be made by children without supervision.
- DO NOT reach for an appliance that has fallen in water or other liquids. Switch off at the mains and unplug it immediately. Keep dry – DO NOT operate in wet or moist conditions.
- NEVER insert pins or other metallic fasteners into the appliance.
- Use this appliance for the intended use as described in this booklet. DO NOT use attachments not recommended by Jam Audio.
- NEVER operate the appliance if it has a damaged cord or plug, if it is not working properly, if it has been dropped or damaged, or dropped into water. Return it to the HoMedics Service Centre for examination and repair.
- Keep cord away from heated surfaces.
- Excessive use could lead to the product's excessive heating and shorter life. Should this occur, discontinue use and allow the unit to cool before operating.
- NEVER drop or insert any object into any opening.
- DO NOT operate where aerosol (spray) products are being used or where oxygen is being administered.
- DO NOT carry this appliance by the cord or use cord as a handle.
- DO NOT use outdoors.
- This product requires a 100-240 V AC power.
- DO NOT attempt to repair the appliance. There are no user serviceable parts. For service, send to a HoMedics Service Centre. All servicing of this appliance must be performed by authorised HoMedics service personnel only.
- Never block the air openings of the appliance or place it on a soft surface, such as a bed or couch. Keep air openings free of lint, hair etc.
- Do not place or store appliance where it can fall or be pulled into a bath or sink. Do not place in or drop into water or other liquid.
- Do not place lighted candles or any other naked flame on the unit.
- Do not place any objects filled with liquids (eg. vases, cups) on the unit or allow it to be exposed to dripping or splashing.
- Failure to follow the above may result in the risk of fire or injury.

2 YEAR GUARANTEE

JAM guarantees this product from defect in material and workmanship for a period of 2 years from the date of purchase, except as noted below. This JAM product guarantee does not cover damage caused by misuse or abuse; accident; the attachment of any unauthorised accessory; alteration to the product; or any other conditions whatsoever that are beyond the control of JAM. This guarantee is effective only if the product is purchased and operated in the UK / EU. A product that requires modification or adaptation to enable it to operate in any country other than the country for which it was designed, manufactured, approved and / or authorised, or repair of products damaged by these modifications is not covered under this guarantee. JAM shall not be responsible for any type of incidental, consequential or special damages. Please note, the stylus cartridge is easily damaged and is NOT included in the product warranty. For replacement stylus cartridges, please contact Customer Service.

To obtain guarantee service on your product, return the product post-paid to your local service centre along with your dated sales receipt (as proof of purchase). Please refer to 'JAM Service Centre' information leaflet for details of your local service centre. Upon receipt, JAM will repair or replace, as appropriate, your product and return it to you, post-paid. Guarantee is solely through JAM Service Centre. Service of this product by anyone other than the JAM Service Centre voids the guarantee.

This guarantee does not affect your statutory rights.

CUSTOMER SERVICE

@ support@homedics.co.uk

✉ HoMedics Group Ltd, HoMedics House, Somerhill Business Park,
Five Oak Green Rd, Tonbridge, Kent, TN11 0GP, UK

☎ +44 (0) 1732 378557

REGISTER YOUR PRODUCT TODAY AT **WWW.HOMEDICSGROUP.COM/REGISTER**



IB-HXTS100-0716-01